

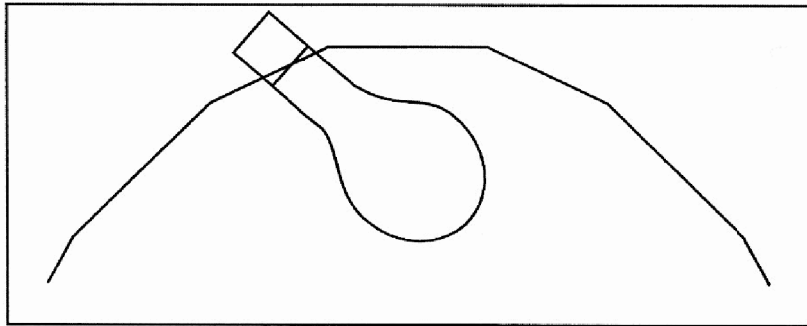
Technical Guiding Specification Guide Sheet

RECESSED CINDER LIGHT



Project Name: _____

U.S. PATENT NO.: 6,976,765 B2



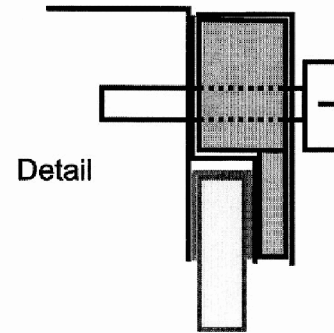
16.5"

15.5"

8.625"

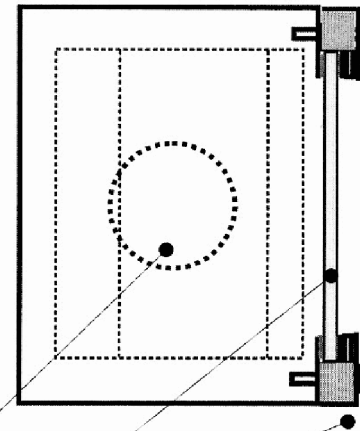
7.625"

6.375 x 14.5
TEMPERED



Detail

5.75"



150W LAMP OR EQUAL

PORCELAIN SOCKET

FACETED REFLECTOR

3/16" FROSTED TEMPERED GLASS

COVER PLATE

GENERAL NOTES:

1. GENERAL VARIATIONS ARE AVAILABLE USING DIFFERENT LIGHT SOURCES AND FOR DIFFERENT APPLICATION; ie - High outside temperature and vandal resistance.

2. ENCLOSURE & COVER TO BE PAINTED IN YOUR CHOICE OF ONE SOLID COLOR.

3. CONDUIT HOLES TO BE DRILLED ON SITE BY INSTALLER.

4. NO STRUCTURAL HEADER IS REQUIRED FOR INDIVIDUALLY RECESSED UNITS

4300 W. North Ave. Stone Park, Illinois 60165 (708-343-1500) (708-343-1562 fax)

www.sq1pl.com or www.coldcathode.com